

Der Tag, der ist so freudenreich BWV 605

Orgel-Büchlein Nr. 7

LPP

J.S. Bach

$\text{♩} = 40$

Violoncello

Violoncello

Violoncello

Violoncello

³

Vc.

Vc.

Vc.

Vc.

5

Vc.

Vc.

Vc.

Vc.

Detailed description: This system contains measures 5 and 6. The key signature has one sharp (F#). Measure 5 features a repeat sign. The first violin part (top staff) has a simple melody. The second violin part (second staff) has a complex, rhythmic accompaniment with many sixteenth notes. The third violin part (third staff) has a steady eighth-note accompaniment. The fourth violin part (bottom staff) has a simple eighth-note accompaniment.

7

Vc.

Vc.

Vc.

Vc.

Detailed description: This system contains measures 7 and 8. The key signature has one sharp (F#). Measure 7 features a repeat sign. The first violin part (top staff) has a simple melody. The second violin part (second staff) has a complex, rhythmic accompaniment with many sixteenth notes. The third violin part (third staff) has a steady eighth-note accompaniment. The fourth violin part (bottom staff) has a simple eighth-note accompaniment.

9

Vc.

Vc.

Vc.

Vc.

Detailed description: This system contains measures 9 and 10. The key signature has one sharp (F#). Measure 9 features a repeat sign. The first violin part (top staff) has a simple melody. The second violin part (second staff) has a complex, rhythmic accompaniment with many sixteenth notes. The third violin part (third staff) has a steady eighth-note accompaniment. The fourth violin part (bottom staff) has a simple eighth-note accompaniment.

11

Vc.

Violin and Viola parts for measures 11 and 12. The system consists of four staves. The top staff is a Violin (Vc.) in treble clef with a key signature of one sharp (F#). It contains a simple melodic line. The second staff is a Viola (Vc.) in bass clef with a key signature of one sharp (F#), featuring a complex rhythmic pattern of eighth and sixteenth notes. The third and fourth staves are also in bass clef with a key signature of one sharp (F#), containing a melodic line with some chromaticism.

13

Vc.

Violin and Viola parts for measures 13 and 14. The system consists of four staves. The top staff is a Violin (Vc.) in treble clef with a key signature of one sharp (F#). The second staff is a Viola (Vc.) in bass clef with a key signature of one sharp (F#), featuring a complex rhythmic pattern with many beamed notes. The third and fourth staves are also in bass clef with a key signature of one sharp (F#), containing a melodic line with some chromaticism.

15

Vc.

Violin and Viola parts for measures 15 and 16. The system consists of four staves. The top staff is a Violin (Vc.) in treble clef with a key signature of one sharp (F#). The second staff is a Viola (Vc.) in bass clef with a key signature of one sharp (F#), featuring a complex rhythmic pattern with many beamed notes. The third and fourth staves are also in bass clef with a key signature of one sharp (F#), containing a melodic line with some chromaticism.

Violoncello 1

Der Tag, der ist so freudenreich BWV 605

Orgel-Büchlein Nr. 7

LPP

J.S. Bach



Violoncello 2

Der Tag, der ist so freudenreich BWV 605

Orgel-Büchlein Nr. 7

LPP

J.S. Bach

♩ = 40



3



5



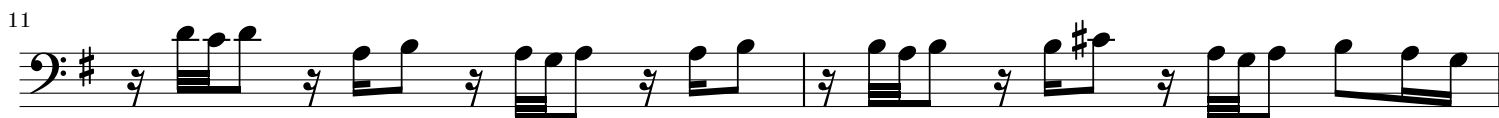
7



9




11



13



15



18



Violoncello 3

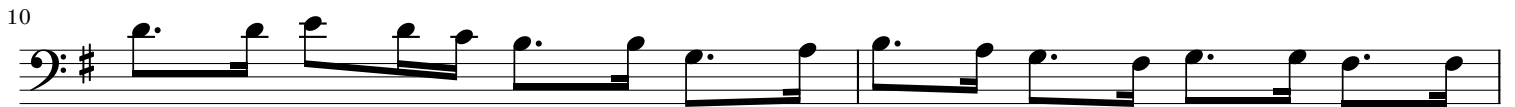
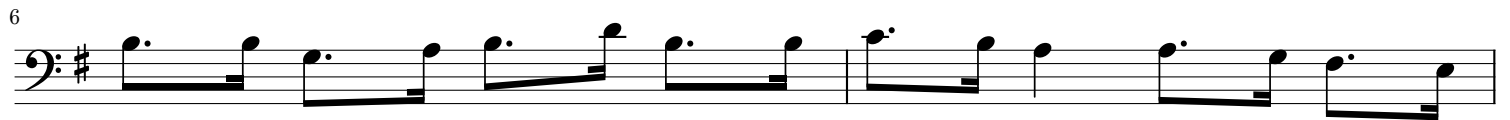
Der Tag, der ist so freudenreich BWV 605

Orgel-Büchlein Nr. 7

LPP

J.S. Bach

♩ = 40



Violoncello 4
Der Tag, der ist so freudenreich BWV 605

Orgel-Büchlein Nr. 7

LPP

J.S. Bach

